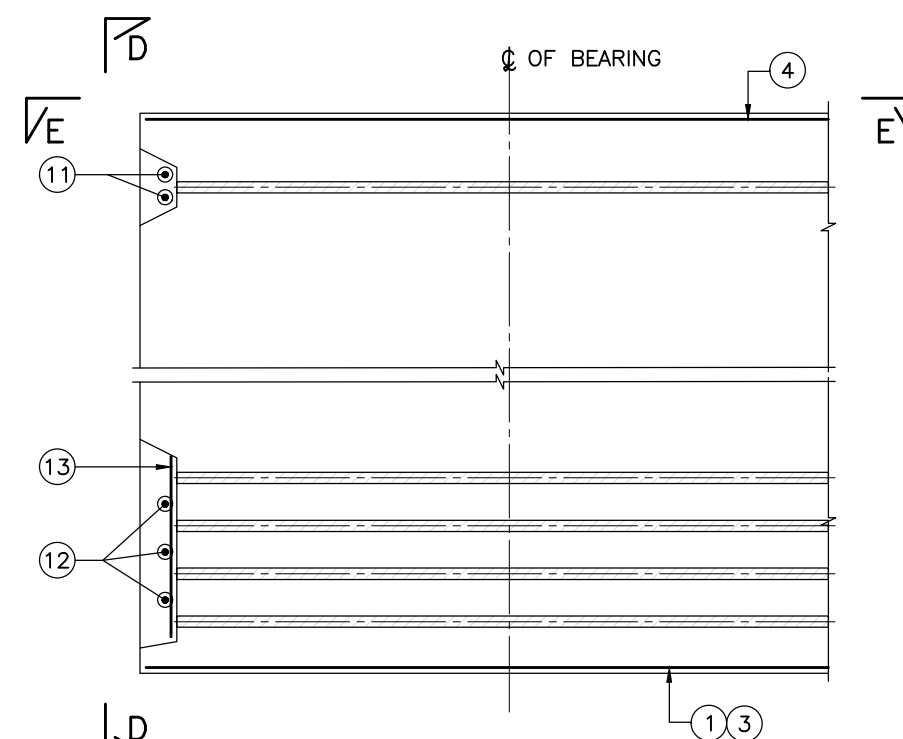


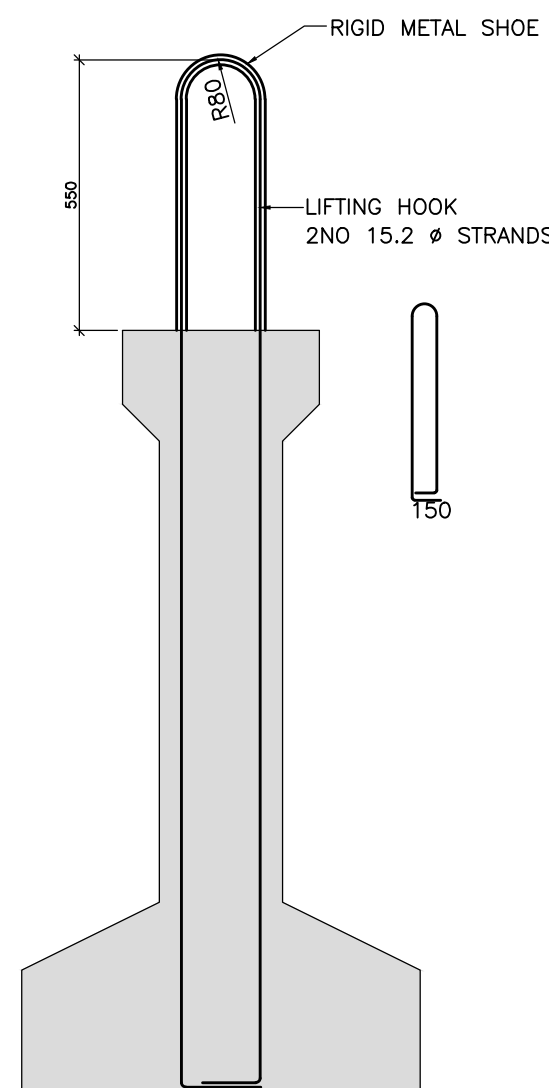
VIEW—E—E
(SCALE 1:10)



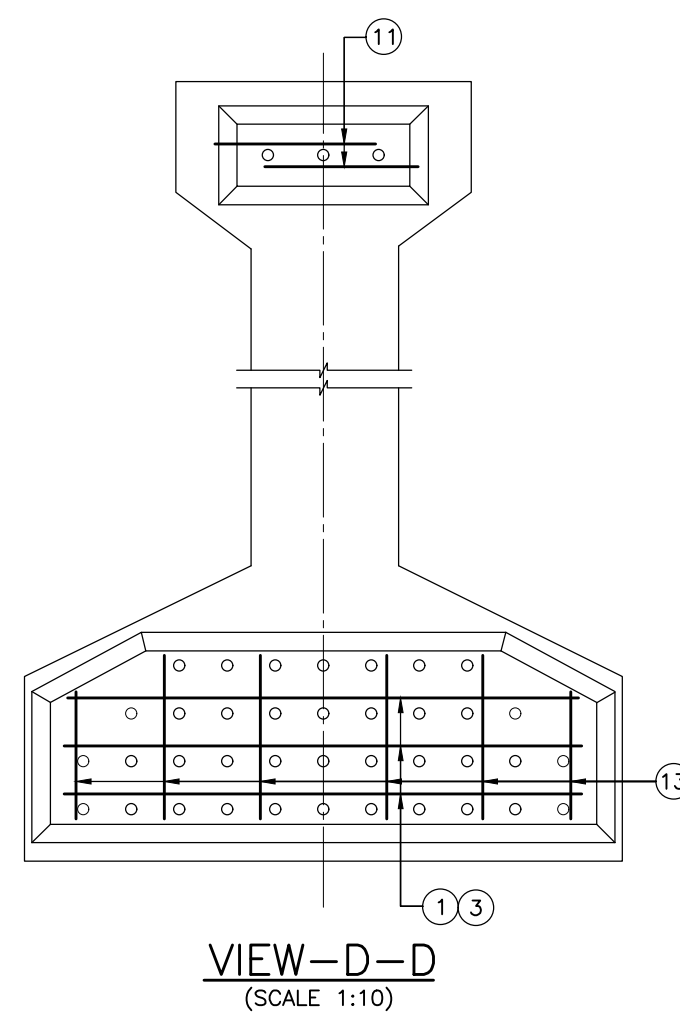
DETAILS OF RECESS REINF.
(SCALE 1:10)

1. ALL DIMENSIONS ARE IN MILLIMETRES, UNLESS OTHERWISE MENTIONED.
2. DIMENSIONS ARE NOT TO BE SCALED, FOLLOW ONLY WRITTEN DIMENSIONS.
3. ALL REINFORCEMENTS SHALL BE Fe-500 CONFORMING TO IS:1786.
4. GRADE OF CONCRETE SHALL BE M60.
5. MINIMUM CLEAR COVER TO ANY REINFORCEMENT SHALL BE 35mm.
6. DEVELOPMENT LENGTH REPRESENTED BY L_d SHALL BE EQUAL TO 41 TIMES THE DIA OF THE BAR.
7. LAP LENGTH SHALL BE EQUAL TO 58 TIMES THE DIA. OF BAR AND NOT MORE THAN 50% OF THE BARS SHALL BE LAPPED AT A SECTION.
8. ALL LAPS SHALL BE STAGGERED, NOT MORE THAN 50% OF REINFORCEMENT SHALL BE LAPPED AT ANY SECTION.
9. ADEQUATE LINKS/SPACER BARS SHALL BE PROVIDED FOR PROPER POSITIONING OF REINFORCEMENT.
10. DOWEL BARS FOR DIAPHRAGM SHALL BE LEFT BEFORE CONCRETING.



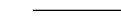
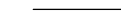

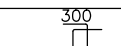
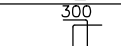
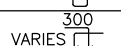
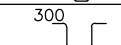
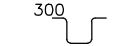
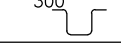

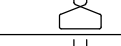
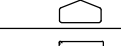

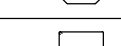

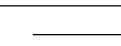
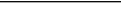

1.	022077-BSPR-CR2-C-VD-GEN-20-2423.....	GENERAL ARRANGEMENT FOR 14M STRAIGHT SPAN SUPERSTRUCTURE AT MATKHERE STATION FOR CR2 FOR P159 TO P160 & P161 TO P162 & P163-P164 (UP & DOWN TRACK)
2.	022077-BSPR-CR2-C-VD-GEN-20-2425.....	PRE TENSIONED STRAND DETAILS FOR 14M STRAIGHT SPAN SUPERSTRUCTURE AT MATKHERE STATION FOR CR2 FOR P159 TO P160 & P161 TO P162 & P163-P164 (UP & DOWN TRACK)
3.	022077-BSPR-CR2-C-VD-GEN-20-2426.....	REINFORCEMENT DETAILS OF 14M STRAIGHT SPAN SUPERSTRUCTURE AT MATKHERE STATION FOR CR2 FOR P159 TO P160 & P161 TO P162 & P163-P164 (UP & DOWN TRACK) - SINGLE TRACK (DECK SLAB AND DIAPHRAGM)

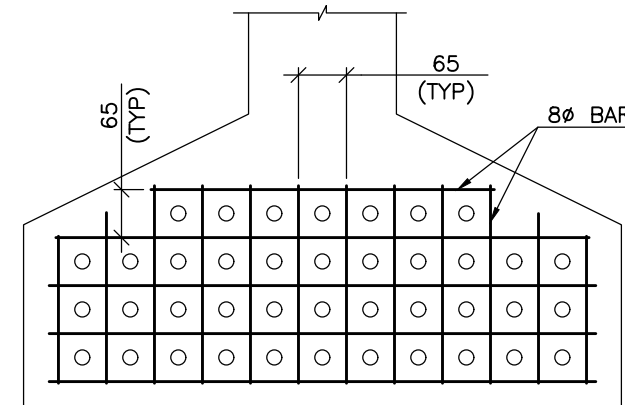


TYPICAL LIFTING HOOK DETAILS
(ONLY LIFTING HOOKS SHOWN FOR CLARITY)
(SCALE 1:15)



VIEW-D-D
(SCALE 1:10)

ITEM	BAR MARK	BAR DIA.	SHAPE	TOTAL NOS./ SPACINGS	REMARKS
I GIRDER	①	Φ12		2 Nos.	
	②				NOT USED
	③	Φ10		8 Nos.	
	④	Φ10		4 Nos.	
	④a	Φ10		2 Nos.	
	⑤	Φ10		2x7 Nos.	
	⑥				NOT USED
	⑦	Φ10		● 300 c/c	
	7a	Φ12		● 250 c/c	
	7b	Φ12		● 175 C/C	
	⑧	Φ10		● 300 c/c	
	8a	Φ10		● 250 c/c	
	8b	Φ10		● 175 C/C	
	⑨	Φ10		● 300 c/c	
	9a	Φ10		● 250 c/c	
9b	Φ10		● 175 C/C		
⑩	Φ10		● 300 c/c		
10a	Φ10		● 250 c/c		
10b	Φ10		● 175 C/C		
⑪	Φ10		2x2 Nos.		
⑫	Φ10		2x3 Nos.		
⑬	Φ10		2x6 Nos.		



MESH DETAIL (M1)
(SCALE 1:10)
(FOR LOCATION REFER DRAWING NO.24)

NOTES :		LEGEND :		REFERENCE DRAWINGS :		REFERENCE DOCUMENTS :		KEY PLAN		STATION BOX KEY PLAN		EMPLOYER :																													
		<div><div><div>⊠</div><div>— BEARING</div></div><div><div>⊗</div><div>— JACKING POSITION</div></div><div><div>↑</div><div>— JACKING POSITION</div></div><div><div>G</div><div>— GIRDER</div></div><div><div>EF</div><div>— EACH FACE</div></div></div>				1. DOC-BSPR-CR2-EV-GEN-20-1361		<div><div><div><div><div></div><div>JAI ABALLI STATION</div></div><div><div></div><div>MATHIKERE STATION</div></div><div><div></div><div>VENSWANTPUR STATION</div></div></div><div><div><div></div><div>KANAKNAGAR STATION</div></div><div><div></div><div>HERBAL STATION</div></div><div><div></div><div>BENNGANAHALLI STATION</div></div></div></div><div><div><div></div><div>N</div></div></div></div>		<table><tr><th>DESIGNATION</th><th>NAME</th><th>SIGN</th></tr><tr><td></td><td></td><td></td></tr><tr><td></td><td></td><td></td></tr><tr><td></td><td></td><td></td></tr><tr><td></td><td></td><td></td></tr><tr><td></td><td></td><td></td></tr><tr><td></td><td></td><td></td></tr><tr><td></td><td></td><td></td></tr><tr><td></td><td></td><td></td></tr><tr><td></td><td></td><td></td></tr></table>		DESIGNATION	NAME	SIGN																											
DESIGNATION	NAME	SIGN																																							
REVISIONS		CONTRACTOR :		QUALITY ASSURANCE		GENERAL CONSULTANTS		EMPLOYER :		PROJECT :																															
		<div><div><div><div></div><div></div></div><div>TRANSPORTATION INFRASTRUCTURE IC</div><div>EDRC-SPECIAL BRIDGES</div></div></div>		The responsibility of control, check and verification of accuracy, correctness, completeness, integration and full compliance of Contract provisions in respect of design analysis and drawing rests with Design & Build Contractor.		<div><div>CHECKED</div><div>NAME</div><div>SIGN</div></div>		<div><div><div><div></div><div></div></div><div>RAIL INFRASTRUCTURE DEVELOPMENT COMPANY (KARNATAKA) LIMITED</div></div></div>		DRAWING TITLE : REINFORCEMENT DETAILS OF 14M STRAIGHT SPAN SUPERSTRUCTURE AT MATHIKERE STATION FOR CR2 FOR P159 TO P160 & P161 TO P162 & P163-P164 (UP & DOWN TRACK) - SINGLE TRACK																															
		DETAILED DESIGN CONSULTANT (DDC) : <div><div><div><div></div><div></div></div><div>an</div><div>crest</div><div>slup</div></div></div>		DDC		PC		SIGN		DRAWING NO. : O22077-BSPR-CR2-C-VD-GEN-20-2424		REVISION a																													
		PROOF CONSULTANT (PC): <div><div><div><div></div><div></div></div><div>Indian Institute of Technology Madras</div><div>IIT P O., Chennai</div><div>600 036 INDIA</div></div></div>		Contractor		NAME		NAME		DWG STATUS D																															
		<div><div><div><div></div><div></div></div><div>STUP Consultants Pvt. Ltd.</div><div>1/3, Gopal Jambharkar Avenue</div><div>1st Floor,</div><div>Madhav Road, Bangalore 560052</div><div>Tel: 080-2209-8800</div><div>Email: info@stupconsultants.com</div><div>www.stupconsultants.com</div></div></div>		<div><div><div><div></div><div></div></div><div>Indian Institute of Technology Madras</div><div>IIT P O., Chennai</div><div>600 036 INDIA</div></div></div>		DATE 28.06.2024		DATE 28.06.2024		DATE 28.06.2024		DATE 28.06.2024																													
a	28.06.24	FOR APPROVAL		SIGN		DATE		NAME		DATE																															
REV	DATE	BRIEF DESCRIPTION		NAME		NAME		NAME		DATE																															
		C		C		C		C		C																															
				PREPARED BY		CHECKED BY		APPROVED BY		APPROVED BY		ISSUED BY																													
				S		S		S		S		S																													
				022077-BSPR-CR2-C-VF-GEN-20-2424-a.mn																																					